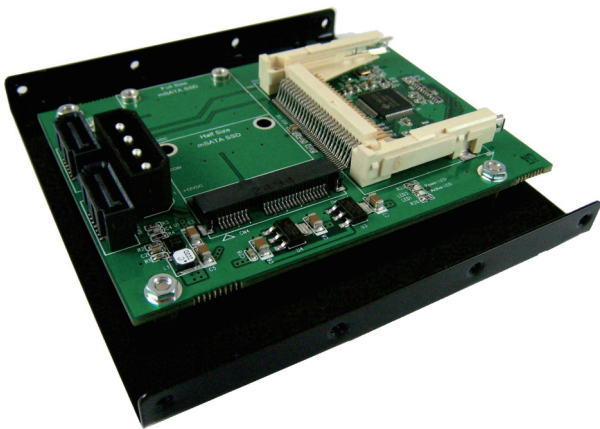


# SATA III 转 mSATA & CF卡 转接卡



## 订购信息

产品型号	S2094A
产品描述	SATA III 转mSATA SSD & CF Card 转接卡 + 3.5" 支架

## 规格

- 支援 SATA Reversion 3.2
- PCI Express Mini Card Electromechanical Spec. 1.2
- PWM synchronous buck converter Power IC
  - 提供最大电流3安培
  - 短路保护
  - 瞬间涌浪电流保护
  - 过热关闭供电保护
  - 静电保护 HBM (Human Body Mode)/2KV
- 符合Compliant with CF+ and CF Card Spec. Rev. 4.1
- 支援ATA/ATAPI-7 specification.
- ATA/ATAPI Ultra DMA Mode 0, 1, 2, 3, 4, 5.
- ATA/ATAPI PIO Mode 0, 1, 2, 3, 4.

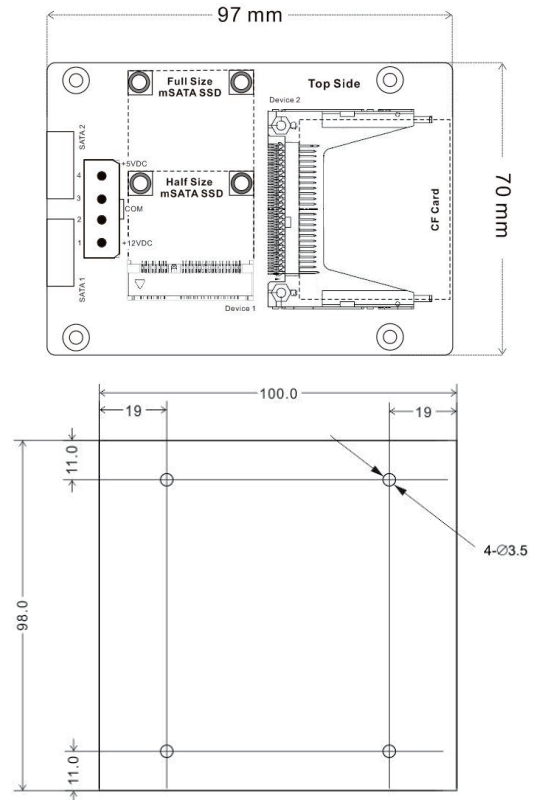
## 支援 mSATA SSD 规格大小

- Half size mSATA : 26.8(L) x 30(W) (mm)
- Full size mSATA : 50.95(L) x 30(W)

## 支援 CF Card 规格大小

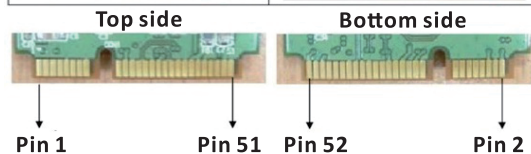
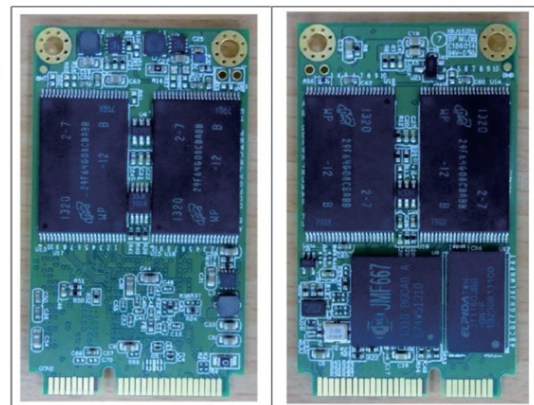
- Type 1 CF Card : 36.4(L) x 42.8(W) x 3.3 (H) (mm)
- Type 2 CF Card : 36.4(L) x 42.8(W) x 5(H)

## 外型尺寸 (单位:mm)

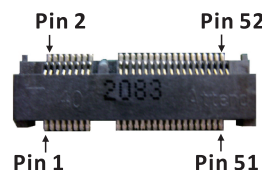


▲ 3.5" Frame Bracket

## mSATA 52pin 金手指



Device connector : mSATA 52pin golden finger



mSATA 52pin 连接器